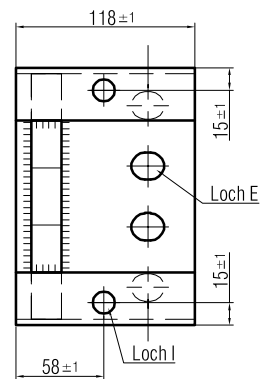




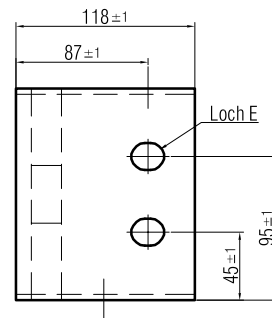
ASTRA
OFROU
USTRA
UVIAS

Richtlinie für Fahrzeugrückhaltesysteme

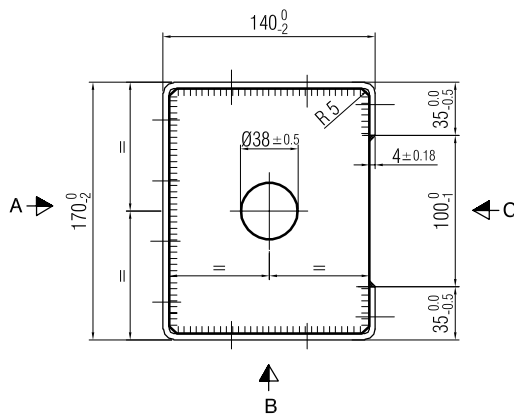
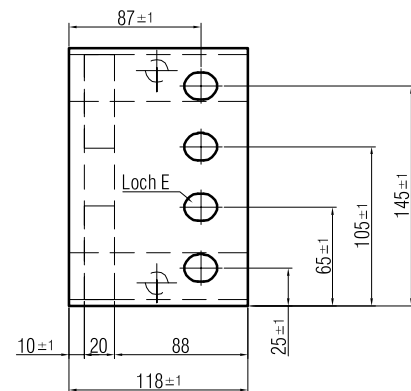
Ansicht C



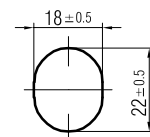
Ansicht B



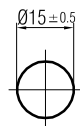
Ansicht A



Detail Loch E



Detail Loch I



Abspannelement Kastenprofil 150'180 an M36

Stahlqualität	S235 JR G2	
Oberfläche	Feuerverzinkt nach EN ISO 1461	
Schweißnähte	QC, a = 4 mm	
Masstab 1 : 2 1 : 5	Ausgabe	01.03.02
	ersetzt	
Zeichnung Nr. D 413		