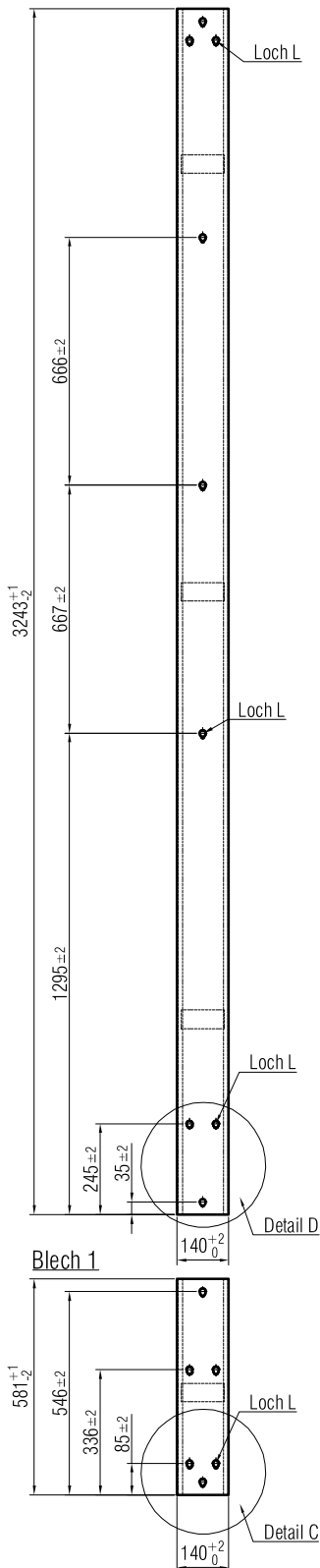




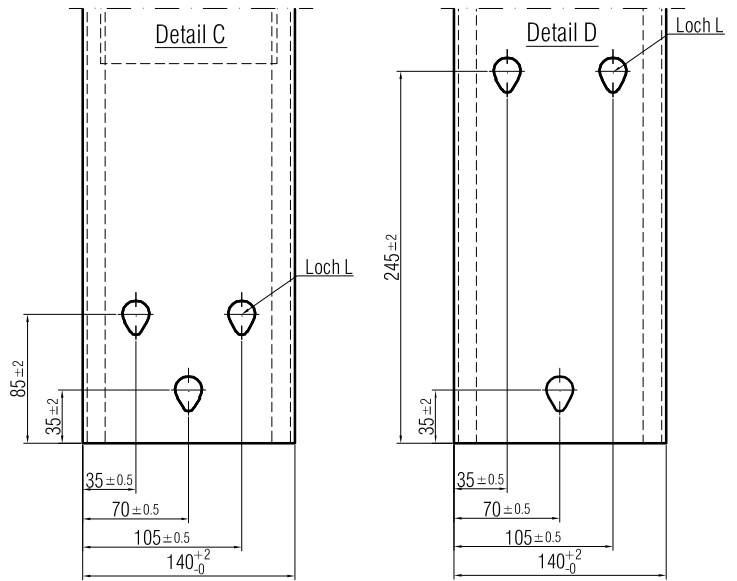
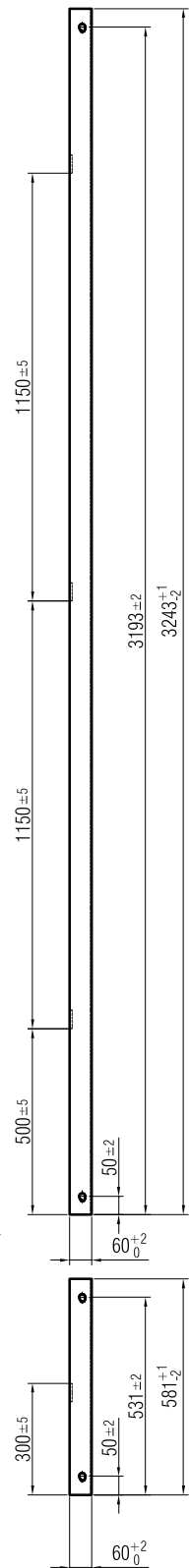
ASTRA  
OFROU  
USTRA  
UVIAS

# Richtlinie für Fahrzeugrückhaltesysteme

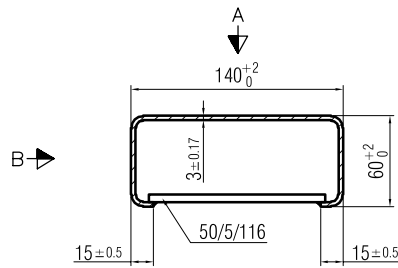
Ansicht von A  
Blech 3



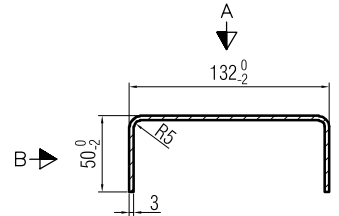
Ansicht von B



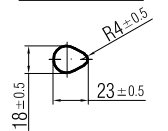
Querschnitt Blech 1 / 3



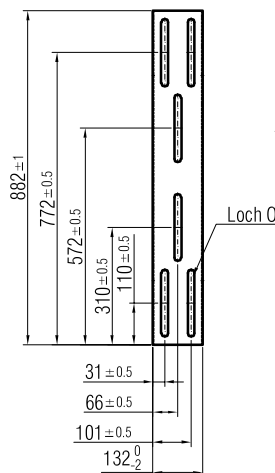
Querschnitt Blech 2



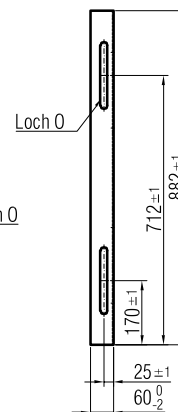
Detail Loch L



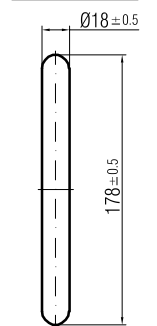
Ansicht von A  
Blech 2



Ansicht von B



Detail Loch O



Handlauf 60'140 Dilataion ≤ 320 mm

Stahlqualität	S235 JR G2	
Oberfläche	Feuerverzinkt nach EN ISO 1461	
Schweißnähte	QC, a = 3 mm	
Masstab	Ausgabe	01.03.02
1 : 2	ersetzt	
1 : 5		
1 : 20		
Zeichnung Nr.		
<b>L 312</b>		