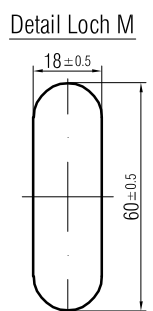
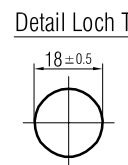
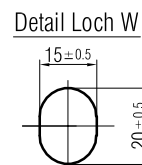
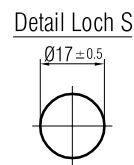
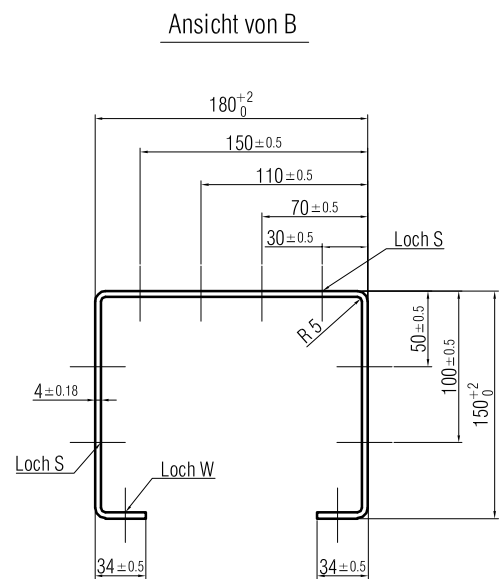
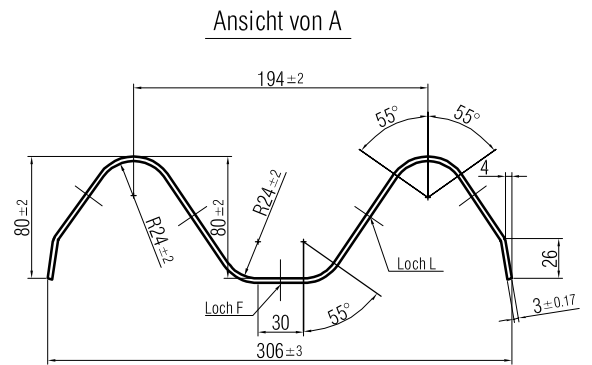
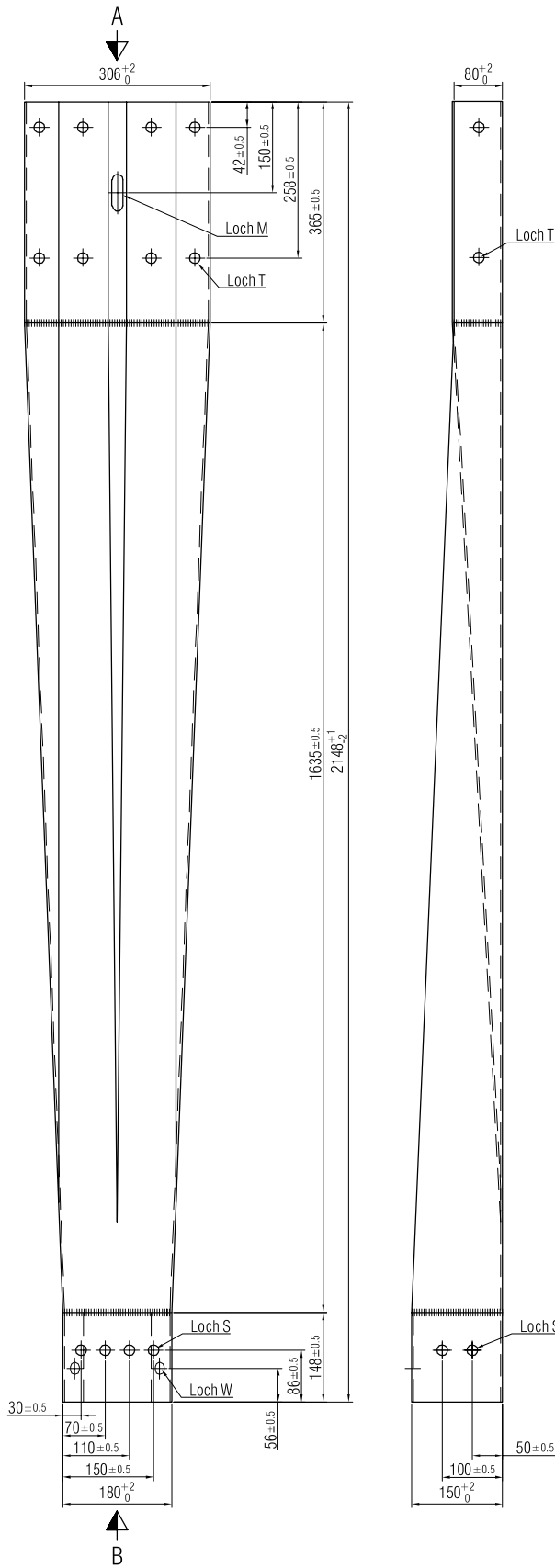




ASTRA
OFROU
USTRA
UVIAS

Richtlinie für Fahrzeugrückhaltesysteme



Stahlqualität	S235 JR G2	
Oberfläche	Feuerverzinkt nach EN ISO 1461	
Schweißnähte	QC, a = 4 mm	
Masstab	Ausgabe	01.03.02
1 : 2	ersetzt	
1 : 5		
1 : 10		
Zeichnung Nr.		
L 516-2		

Übergang
Planke Profil A auf Kastenprofil 150'180